

Transforming the World
for Tomorrow, Global TOP 100

Transforming the World
for Tomorrow, Global TOP 100



JEONBUK
NATIONAL UNIVERSITY

Jeonbuk National University Now (2025)



Full time Faculty

1,060



Staff members

1,500



Enrolled Students

22,000

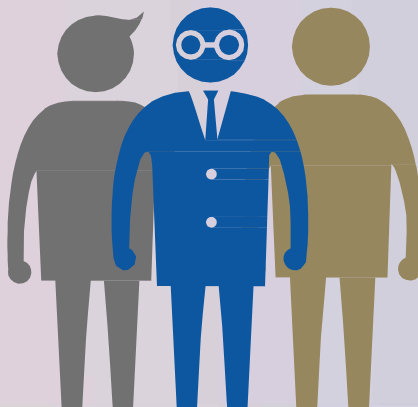


Alumni

250,000

Jeonbuk National University
is one of Korea's 10 national
flagship universities.

We seek to lead in national
development by fostering
student and faculty talent
through innovative education
and research.



5

Campuses

2,000

International
Students

15

Colleges

7,000

Ph.D Recipients

Greatness of Jeonbuk National University



1st
among
flagship universities
The JoonAng Daily
(23)

1st
among
flagship universities
Leiden Ranking
(22~22)

2nd
among
flagship universities
QS World University
Ranking(22)

2nd
among
flagship universities
THE World University
Rankings(22)

No.176
Polymer
Engineering

No.191
Chemical
Engineering

No. 212
Condensed
Matter Physics

No. 230
Physical
Chemistry

No.240
Life
Science

No.258
Materials
Science

**Top 100 departments
in the world** (US NEWS, 23)

**Top 200 departments
in the world** (US NEWS, 23)



Among Flagship National Universities

Top **1**

Student Satisfaction For 6 consecutive years
(Korean Standard Association (KSA) 2019~2024)



Excellence in Education

Investing fully in Student's Education

JBNU's reputation from outside

No.1

Regional
Universities

Student Satisfaction
By Korea Standards
Association
(2019~2024)

AClass

University Innovation
Support Project's
comprehensive evaluation
(2021)

3

Consecutive
Years

Regional Leading
University
Fostering Project
(2021~2023)

5,797

Total Capacity of
Residence Hall



1,842

Number of
International
Students
(2023)



No.1

University Library
Evaluation in the Nation
The Best Institution
from pilot evaluation



JEONBUK
NATIONAL UNIVERSITY

JBNU NAMWON GLOCAL CAMPUS

Department of Glocal Commerce

Department of Korean Language

Department of K-Entertainment





JBNU Namwon Glocal Campus

Majors

1) Glocal Commerce

- Cultivate professionals who are fluent in Korean and equipped to lead in both global trade and the local company

2) Korean Language

- Cultivate professionals in Trade, translation, and Korean language education for foreigners

3) K-Entertainment

- Cultivating professionals with practical skills in K-POP and expertise in planning and developing Hallyu content.

Application Schedule & Admission Requirements

• Application Schedule

(1st Round) Sep 22 – Oct 3, 2025

(2nd Round) Nov 5 – Nov 19, 2025

(3rd Round) Dec 24 – Dec 31, 2025

• Admission Requirements

- 1) TOPIK Level 2 or higher
- 2) Course Completion Certificate from Korean Language Education in Korea(Level 3 or higher)
- 3) JBNU Korean Language Proficiency Test Level 2 or higher(only for students recommended by the JBNU International Center)

Scholarship System for Namwon Glocal Campus Students

Admission Scholarship

- **Housing Support for Freshmen**

USD 1,000(USD 500 per semester X 2semester(total of two semesters))

- **Living Scholarship for Freshmen**

Additional 30% Tuition Support for 1 year (total of two semesters)

- **First Semester Scholarship**

Varies based on your Language Level
※ TOPIK Level 6 or IELTS 8
(Full tuition waiver)

Academic Excellence Scholarship (from 2nd semester)

- Based on GPA from the previous semester

- Tuition reduction ranging from 20% to 100%

- Automatically reviewed each semester

TOPIK Scholarship

- Improve TOPIK Level scores after admission

- Scholarships are granted for each attainment of TOPIK Level 4 or higher

Additional Opportunities

- On-campus work programs

- Campus Buddy Program

- Social Media Supporter (Local Government)

- Administrative Assistant (Work-Study Program)

- Global Study Group

Get in Touch with Us

JBNU

- ▶ Undergraduate Admissions:
admissionu@jbnu.ac.kr
- ▶ Graduate Admissions:
admissiong@jbnu.ac.kr
- ▶ Feeling Korea Program:
hanalee@jbnu.ac.kr
- ▶ Korean Language Education Center:
jbnukelec@jbnu.ac.kr

Instagram

@jbnu_international_affairs



Instagram

@jbnukelec

If you have any questions, please don't hesitate to contact us !